

New Age Networks that are Secure by Design



As network is at the heart of enterprises' connectivity to their internal stakeholders, partners, and clients, securing it becomes one of the primary objectives for any organisation.

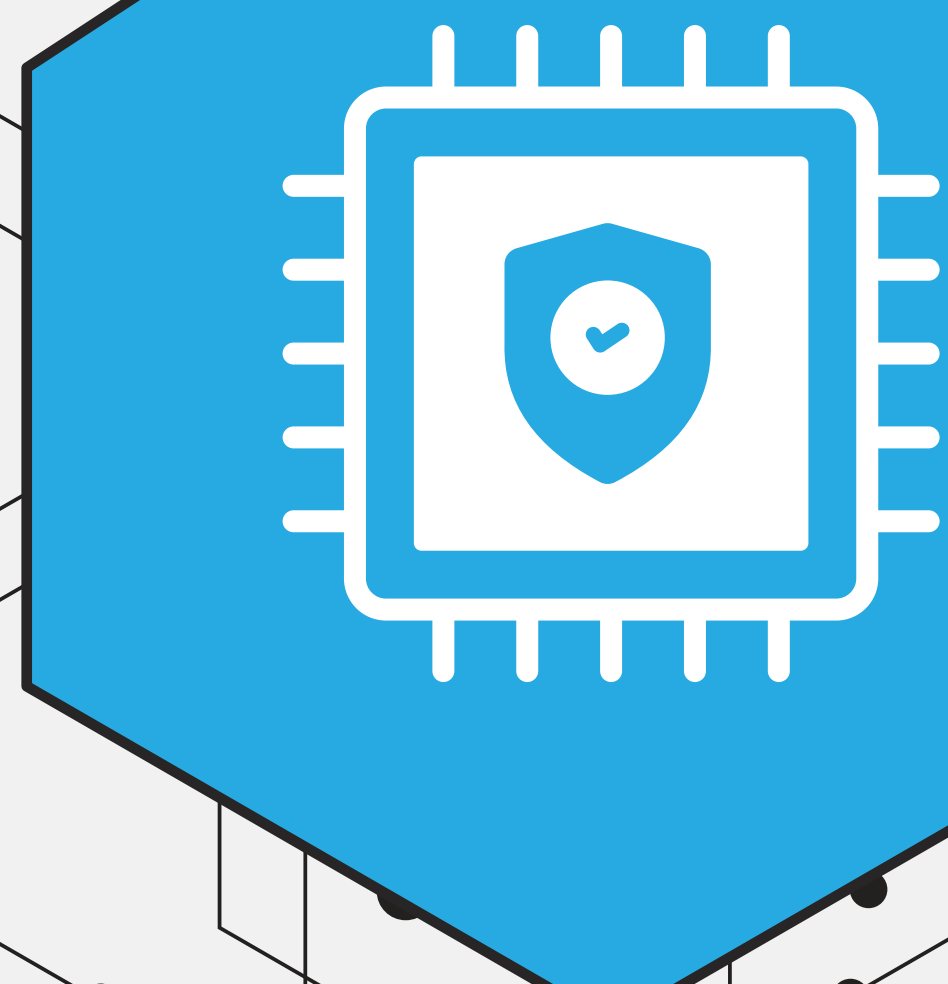
The need of the hour is to adopt a proactive and strategic approach that considers security from the beginning of any network transformation projects.

Because of the complexity of the tasks involved, it becomes imperative for organizations to partner with the right Managed Security Service Providers (MSSPs) to swiftly meet their ambition of truly securing their network.

Here are the core and additional capabilities that IT leaders and CISOs should expect while choosing the right MSSP:

Proven expertise in securing hybrid network

As data and applications move beyond the enterprise firewall from cloud to edge, MSSPs should be able to offer hybrid network protection including firewall, intrusion protection system, URL filtering and so forth.



Advanced security controls

Provide governance, risk, and compliance management for overarching controls and policy alignment connected to a holistic view of threats across organisational assets spread across premises and cloud.

Security Posture Assessment

Provide assessment services to baseline and improve the enterprise security posture.

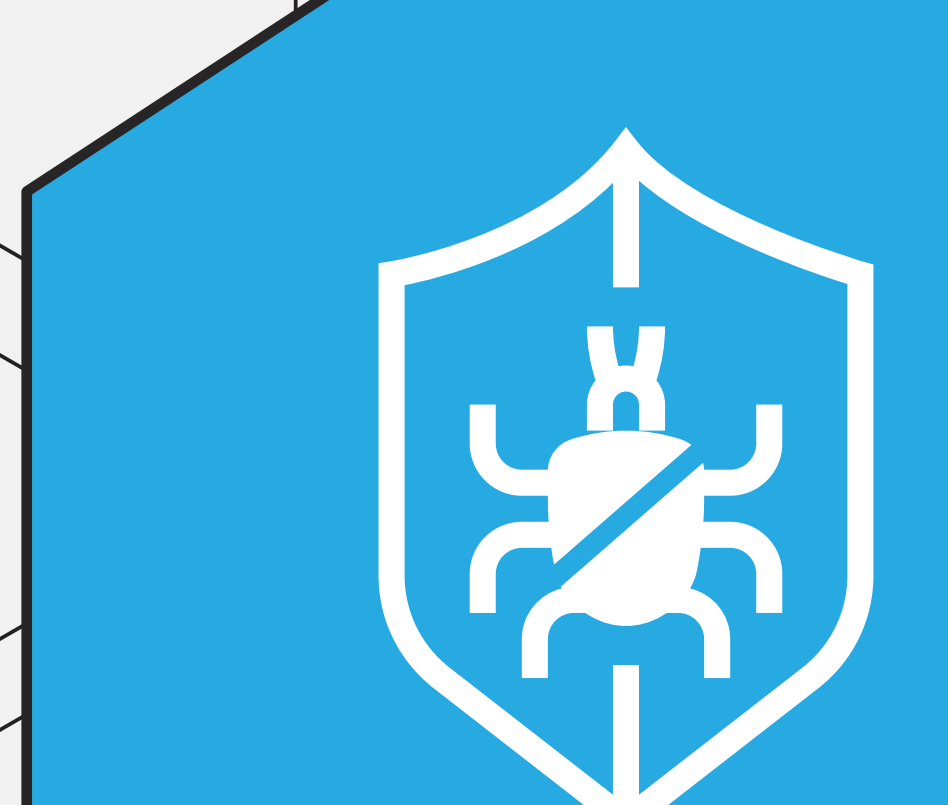


Augmented security control for cloud

Offer additional security controls for a flexible cloud-based approach to protect the new edge with authentication and secure access, secure web gateway, CASB and anti-DDoS, among others.

Protection from network-based attacks

Differentiate between malicious and legitimate traffic through a real-time network analytics platform. Mitigate attacks and manage risks across on-premises and multi-cloud environments.



Advanced threat intelligence

Offer real-time monitoring, incident response and advanced detection and remediation capabilities tied to relevant cybersecurity KPIs. A cloud-based platform makes it easier to triage security events and detect and remediate malicious attacks before they happen.



To know more on why security should be the fulcrum of your network design, read the TATA Communications-IDC whitepaper

Reimagining Security to Align with Network Transformation Goals