

# TATA COMMUNICATIONS

## Mobile core value proposition

December'21

# AGENDA

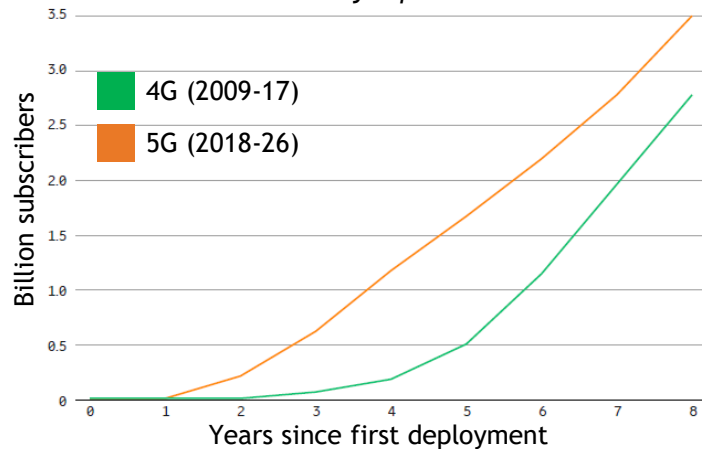
- Recent trends and technological advancements
- Potential benefits of exploring partnership expansion
- Tata Communications - Usage Based Services
- Mobility core value proposition
- Our strengths, accelerators and differentiators
- Appendix

# TATA COMMUNICATIONS

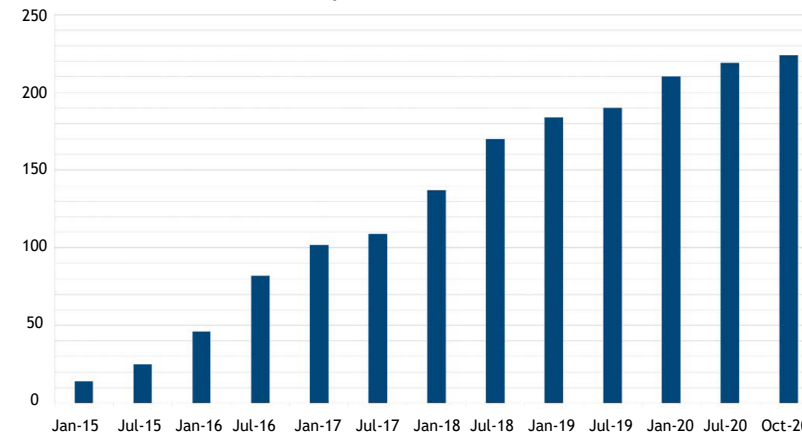
## RECENT TRENDS IN TELECOM MOBILITY

HIGHLIGHTING THE SPEED OF INNOVATION AND SHIFT FROM TRADITIONAL BUSINESS MODELS

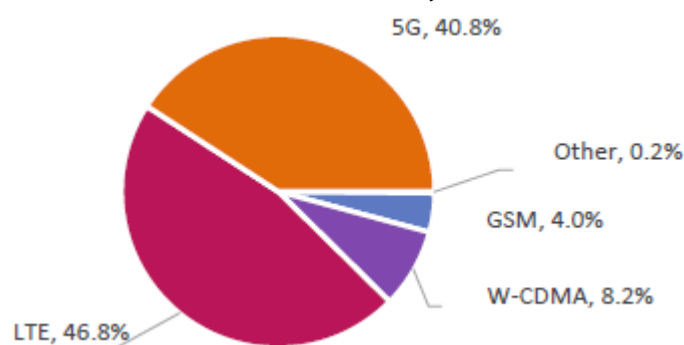
Comparison of 5G and 4G subscription uptake  
Source: Ericsson mobility report



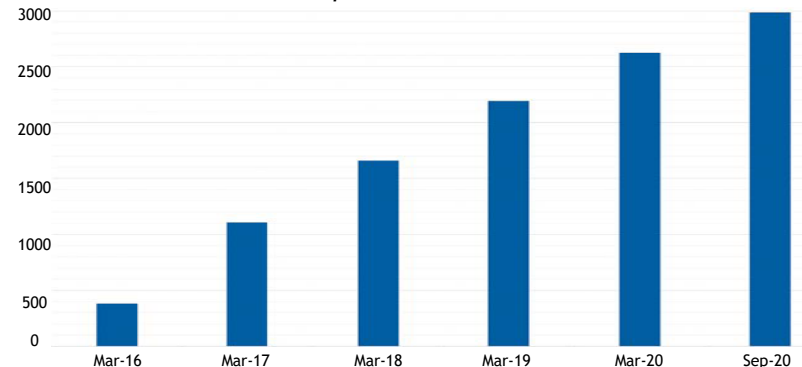
Growth in number of commercial VOLTE network worldwide  
Source: GSA VOLTE report



Mobile subscriptions by technology, end 2026  
Source: GSA LTE and 5G market forecasts



Growth in VOLTE devices  
Source: GSA VOLTE report



### Changing customer preferences

- Demand excellent experience, privacy and speed
- Reduced movement
- Mobile broadband driven in the digital age

### Increasing complexity

- Pace of transformation
- Multiple standards
- Disappearing industry boundaries

### Squeezing margins

- Regulations clamping down on rates
- Market forces
- Increasing competition
- Fragmentation of supply

### Increased Opex and Capex

- New technologies
- New partner connections
- Security and fraud
- AI and Analytics

# DRIVING AHEAD OF THE RACE ON TECHNOLOGICAL EVOLUTION

CHANGES BEING EXPERIENCED ACROSS THE LANDSCAPE OF MOBILE CORE

## Internal landscape

Agility and flexibility of development and execution

Security of networks and data

AI and automation driving efficiency of operations and analytics

Profitability and returns from increasing investments

## External landscape

**Customer preferences driven by new technologies** - for example, XR/ VR implementation through 5G, IoT, VoLTE roaming, Containerisation, etc.

**New use cases arising out of existing assets**, for example, existing Core connectivity (mobile core, wifi core, etc.) may be utilized for carrying IoT traffic

**Cyber risk and fraud** - for example, open sourced standards, unsecured networks and increasing change in technologies may lead to increased threat of fraud and spam

**Expanding partner ecosystems**, for example, interdependencies between OEMs, SaaS, Connectivity service providers, carriers, operators and Enterprises

## GIVING YOU REASONS TO EXPAND YOUR PARTNERSHIPS

WITH TECHNOLOGY ADVANCEMENTS, CHANGING CUSTOMER BEHAVIOUR AND SHRINKING TRADITIONAL BUSINESS, THERE ARISES A NEED FOR AGILITY AND GROWTH OPPORTUNITIES

Reason for change	Description
New business models and revenue streams	Seek and partner with disruptors that are pioneering new business models and diversifying revenue generating opportunities by focusing on adjacent industries, in turn maximizing revenue monetisation from existing assets
New distribution channels and extended reach	Expand coverage and increase redundancy while incrementally reducing marginal costs, thereby, improving margins
Rationalization and control over your customers' usage	High amount of customizations through programmable APIs that help you drive changes to your service based on your customers' usage patterns in a fast paced environment
Increase your marginal benefits from Partners	Instead of a service based partnership, focus on a portfolio based partnership (Revenue/ cost) across the communications services, viz. Signalling, Voice, Messaging, et al. Thereby, increasing your marginal benefits from every partnership and driving down potential opportunity cost
Organization flexibility	Speeding up processes and resolutions that provide flexibility, scalability and data based insights for further driving up your margins

# Introducing Tata Communications

# WE ARE THE POWERHOUSE OF THE WORLD'S FASTEST ECONOMIES

Over **12,000** petabits of  
internet traffic is carried on our  
internet backbone every month



We enable over **5 billion**  
transactions per year



We're **#1** in colocation in India.  
A leading player in managed hosting  
and cloud services globally



We connect businesses to  
providers who account for almost  
**50%** of cloud computing

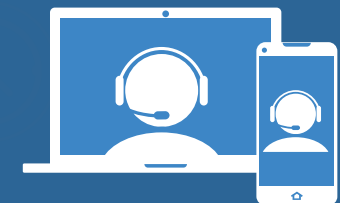


We handle **1 in 12** of  
all international voice calls



**20** terabits of international  
bandwidth lit capacity

**85 million**  
voice transactions  
handled every day



# CARRIER SERVICES | PRODUCT PORTFOLIO

## VOICE

### TRANSPORT & TERMINATION

- ❖ VTS Prime
- ❖ VTS Corporate
- ❖ HD Voice

### VALUE ADDED SERVICES

- ❖ Int'l Toll Free
- ❖ LNS
- ❖ Mobile LNS
- ❖ Fraud Mitigation
- ❖ ACNS
- ❖ Domestic Voice
- ❖ PSTN replacement
- ❖ CLI masking

- 13 Voice POP's Globally
- >240,000 km subsea fiber infrastructure &
- >50,000 km terrestrial fibre

## SIGNALLING (SCCP/DSX)

- ❖ World's largest Signalling network
- ❖ One-stop solution for **800+** dest.
- ❖ Symmetrical traffic over a single-hop with over **290** on-net dest. and major ANSI dest.
- ❖ Mobile roaming services supporting 2/3/4/5G(WIP) roaming within a single solution framework

## A2P

- ❖ Carrier-grade platform
- ❖ Global aggregation
- ❖ Hosted SMS Firewall
- ❖ Long code
- ❖ Short code
- ❖ 2 way messaging
- ❖ Campaign management



Guaranteed  
**quality of  
service and  
experience**



We **own, manage  
and support** our  
network on an end-  
to-end basis



24x7 **NOC**  
support



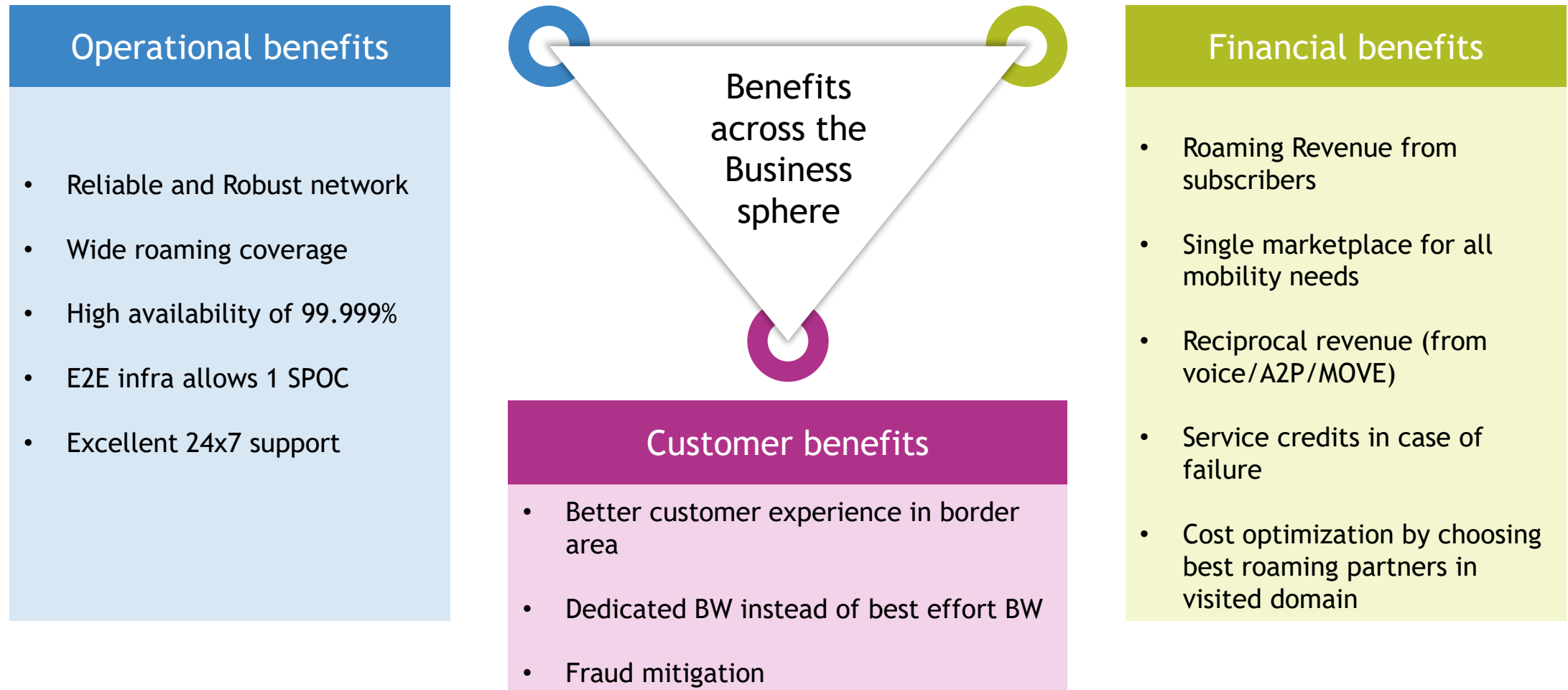
**85% of issues  
resolved within  
4 hours** of its  
reporting

# Why Tata Communications

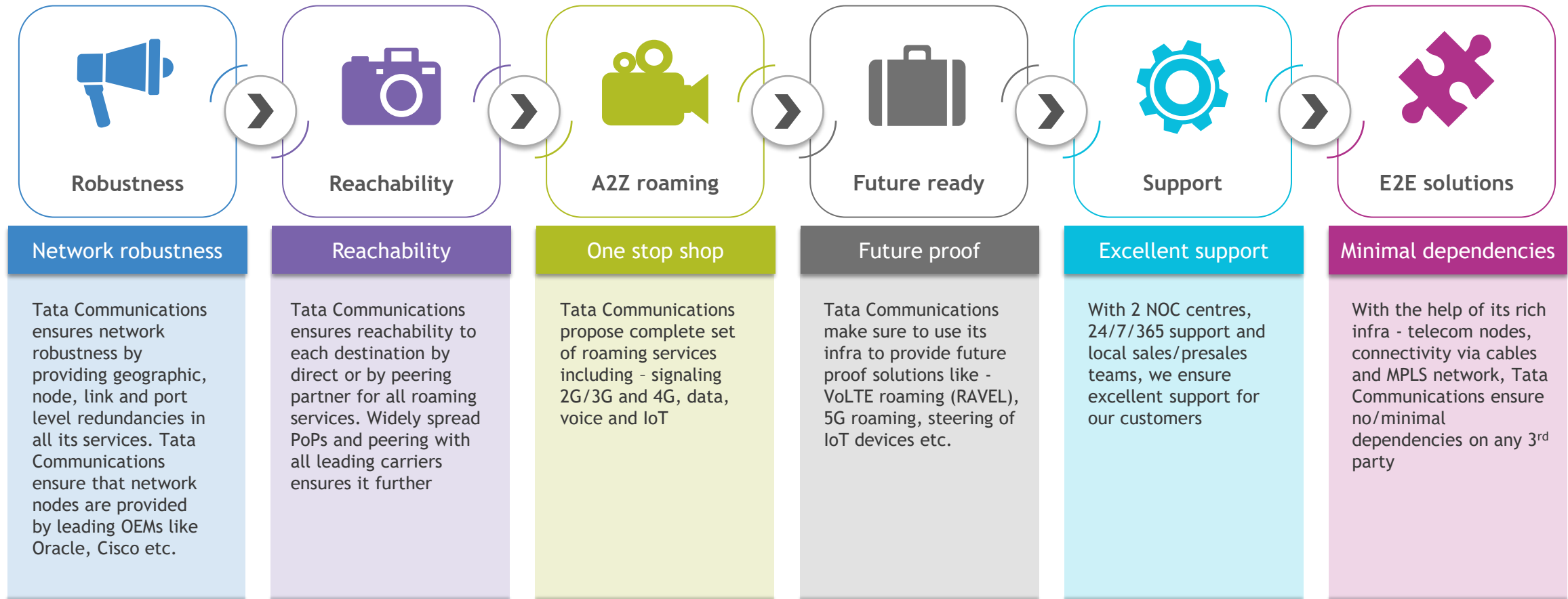


# POTENTIAL BENEFITS THAT TATA COMMUNICATIONS CAN OFFER

IN ADDITION TO THE TRUST WE BRING TO THE TABLE, WE WILL HELP YOU REALISE BENEFITS ACROSS OPERATION, FINANCIAL AND CUSTOMER ASPECTS OF YOUR BUSINESS



# WHY TATA COMMUNICATIONS FOR SIGNALLING?



# TATA COMM IS BEST POSITIONED TO HELP YOU REALISE THE POTENTIAL IMPACT

OUR INNOVATIVE ENGAGEMENT MODELS WILL DELIVER CONVENIENCE OF SERVING YOUR CUSTOMERS WITH HIGH QUALITY AT LUCRATIVE COSTS

Categories of engagement models

## Tier Based model

- Volume or destinations can be billed on basis of tiers

## Threshold based model

- Volumed or destinations can be billed on threshold basis

## Fixed unit rate with min commit

- Min commitment with a fixed/variable volume or destinations

## Unlimited traffic model

- Fixed billing for unlimited traffic

## Bundled model

- Bundling other roaming services like SCCP, DSX, IPX
- Cross sell A2P or voice
- Upsell VAS

## Hybrid model

- Mixing transactions & bundled model
- Unlimited model with BW capping

We have made commercial arrangements and other thresholds, across our engagement models, modular in nature by breaking down various variables of Mobile Core

Flexibility to choose various thresholds and blends across these variables

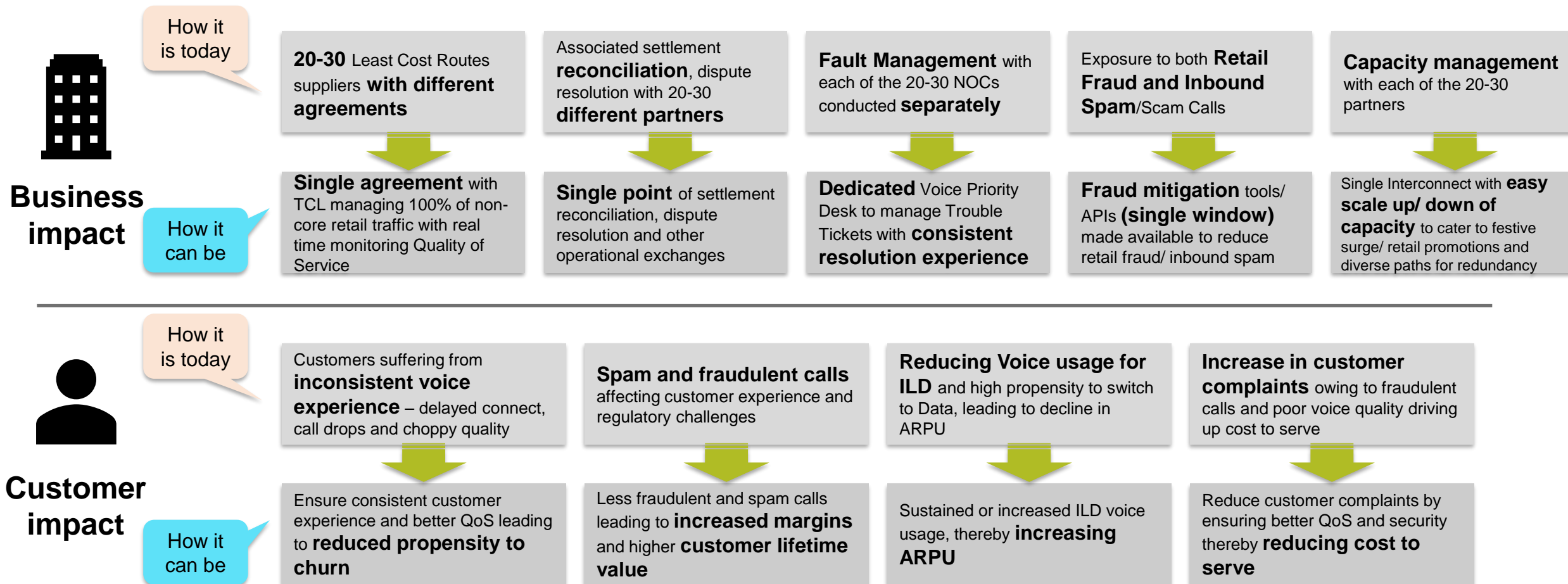


# TATA COMMUNICATIONS

## VISUALISING VALUE CREATION

A SNAPSHOT OF HOW PARTNERING WITH US LOOKS LIKE

WIP



# POINTS OF PRESENCE

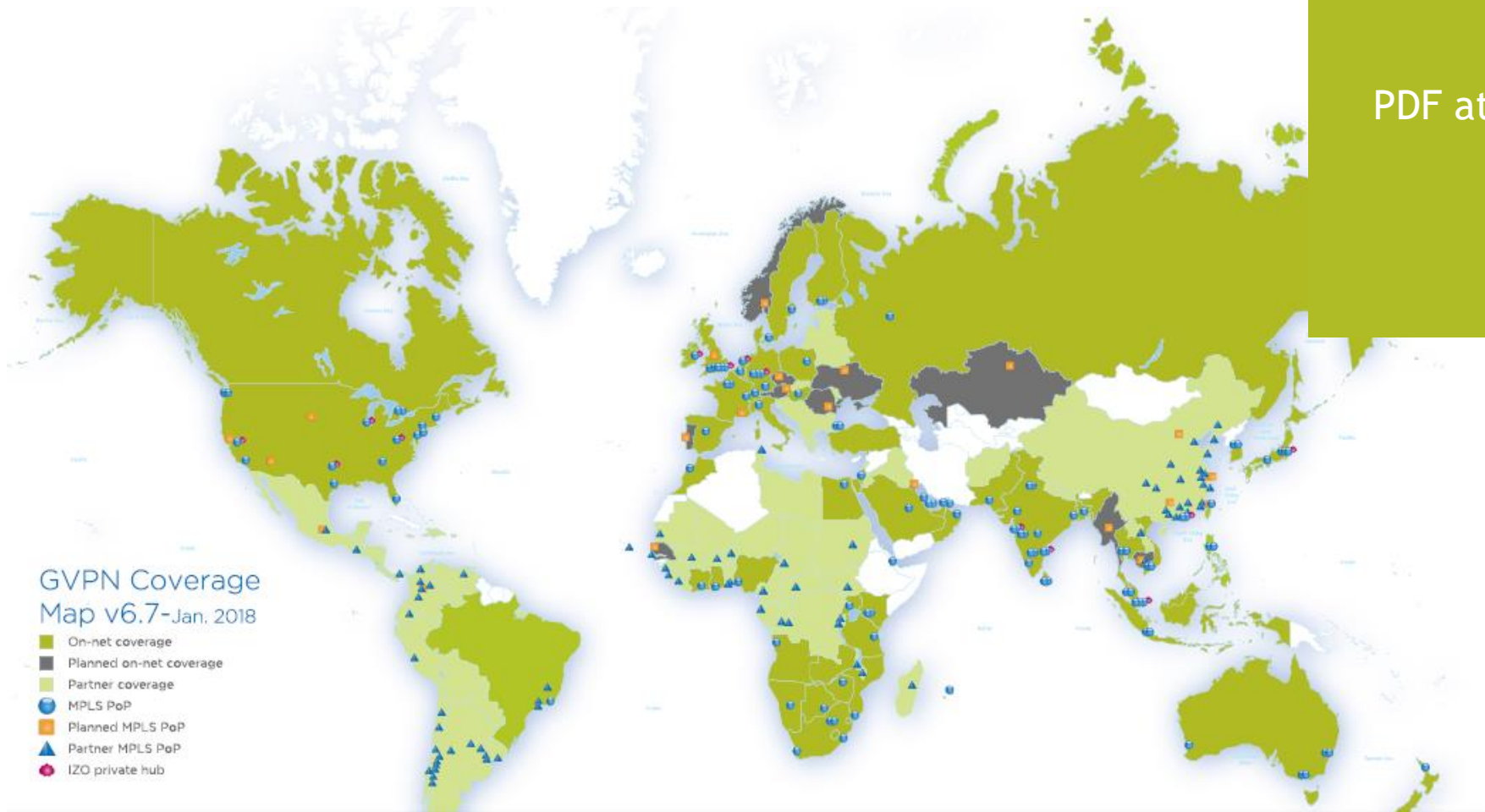
TATA COMMUNICATIONS



PDF attached for better resolution



PoP Coverage



GVPN Coverage  
Map v6.7-Jan. 2018

- On-net coverage
- Planned on-net coverage
- Partner coverage
- MPLS PoP
- Planned MPLS PoP
- Partner MPLS PoP
- IZO private hub

## Americas

- Atlanta
- Ashburn
- Bogota
- Boston
- Chicago
- Dallas
- Denver
- Houston
- Los Angeles
- Miami
- Mexico City
- New York
- Newark
- Phoenix
- Santa Clara
- Seattle
- Sao Paulo
- Silicon Valley
- Toronto
- Wall

## Europe

- Astana
- Amsterdam
- Brussels
- Bucharest
- Budapest
- Copenhagen
- Dublin
- Frankfurt
- Geneva
- Helsinki
- Istanbul
- Kiev
- Lisbon
- London
- Madrid
- Marseille
- Manchester
- Milan
- Moscow
- Munich
- Oslo
- Paris
- Prague
- Vienna
- Stockholm
- Slough
- Warsaw
- Zurich

## Africa & Middle East

- Abidjan
- Accra
- Al Fujairah
- Casablanca
- Cape Town
- Cairo
- Dakar
- Dar-es-Salaam
- Djibouti
- Doha
- Dubai
- Durban
- Gaborone
- Harare
- Johannesburg
- Kampala
- Kuwait
- Lagos
- Luanda
- Manama
- Maputo
- Muscat
- Nairobi
- Port Louis
- Riyadh
- Tel Aviv
- Windhoek

## India

- Ahmedabad
- Bangalore
- Chennai
- Emakulam
- Hyderabad
- Kolkata
- Mumbai
- New Delhi
- Pune

## Asia Pacific

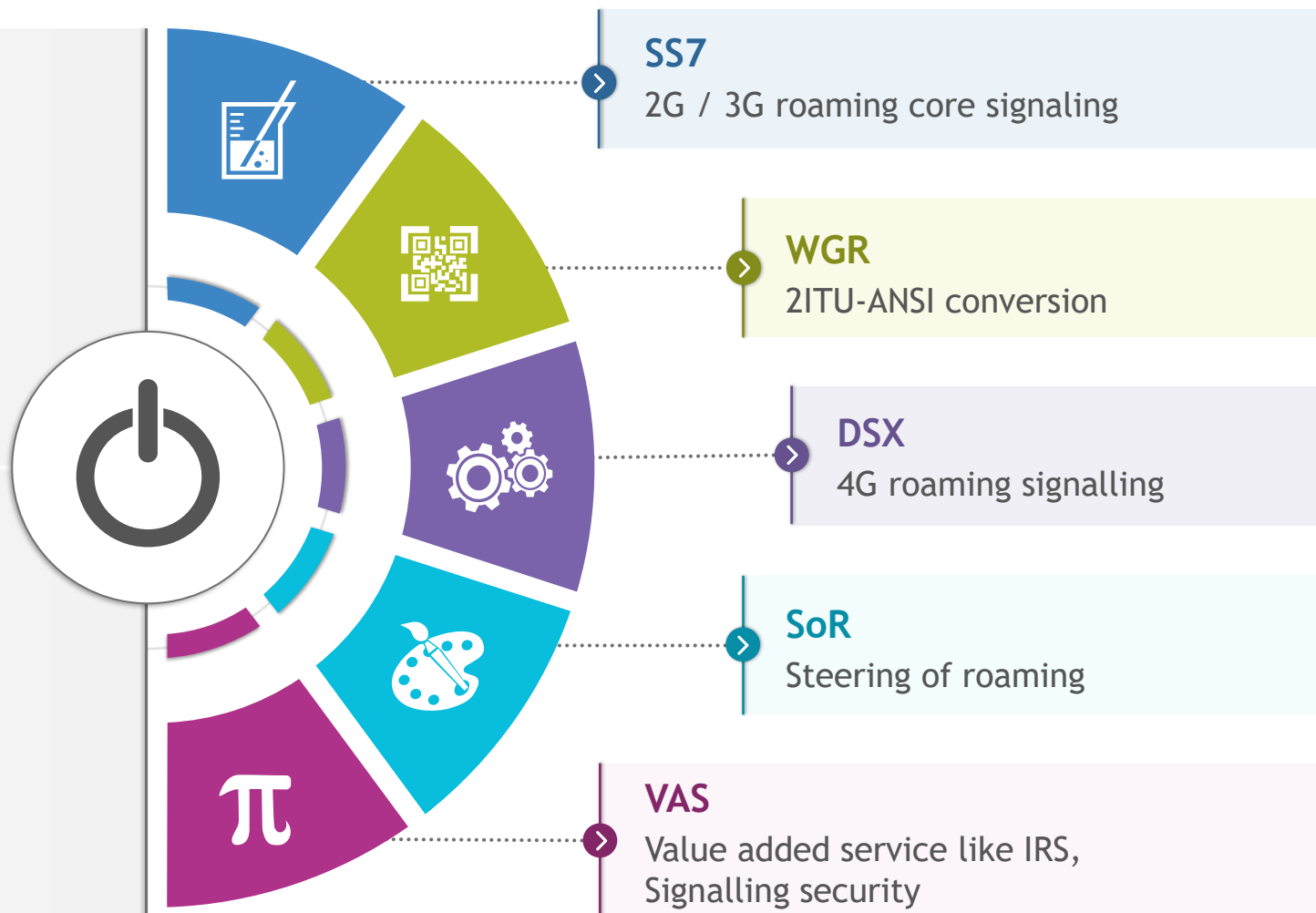
- Auckland
- Bangkok
- Beijing
- Colombo
- Dhaka
- Guangzhou
- Ho Chi Minh
- Hong Kong
- Jakarta
- Karachi
- Kuala Lumpur
- Manila
- Melbourne
- Naypyidaw
- Osaka
- Perth
- Phnom Penh
- Seoul
- Shanghai
- Singapore
- Sydney
- Taipei
- Tokyo

# SIGNALLING VALUE PROPOSITION

# TATA COMMUNICATIONS SIGNALLING PORTFOLIO

Manage your roaming traffic efficiently, while providing a seamless user experience.

Mobile roaming services for LTE roaming migration, supporting 2G, 3G, 4G and 5G roaming within a single solution framework.

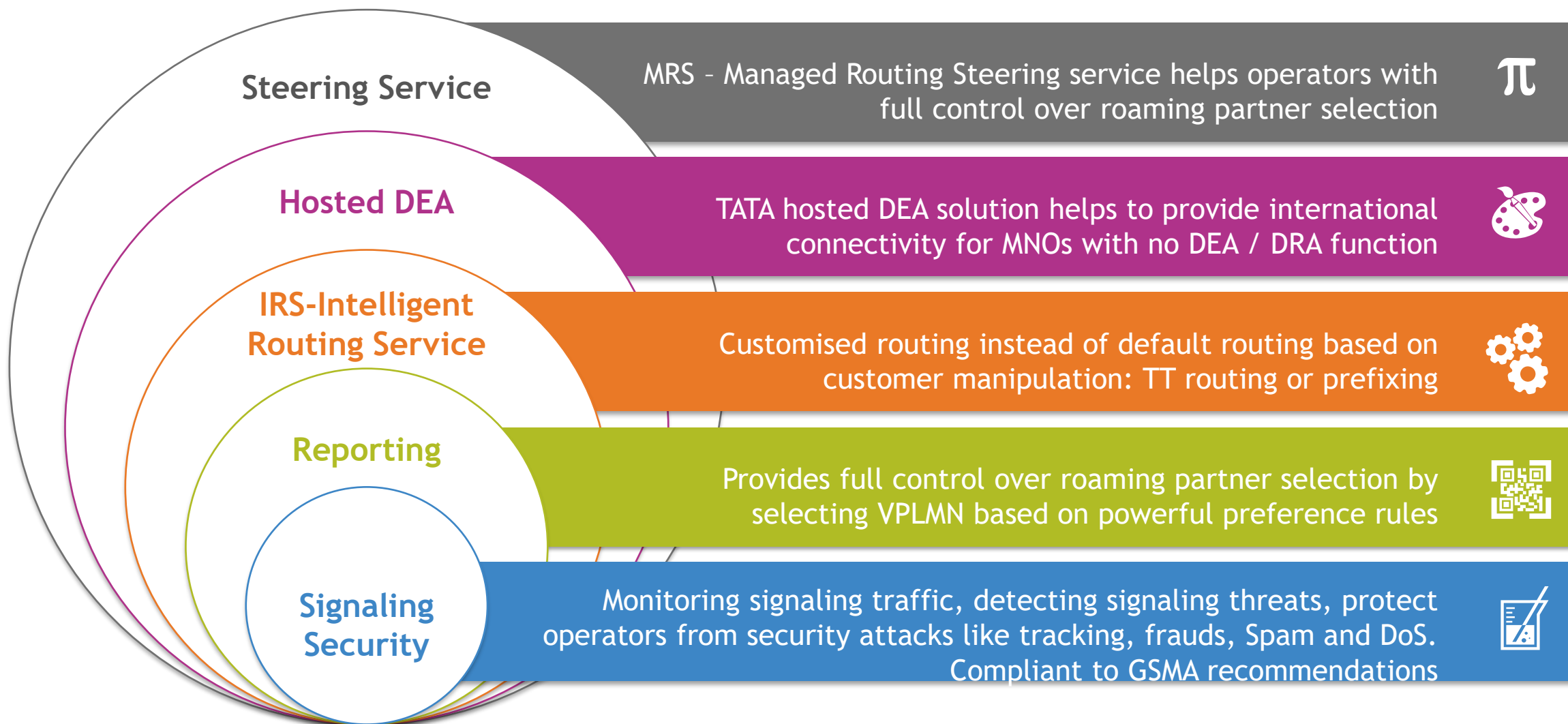


## ROADMAP OF INCREMENTAL INNOVATION

WE ENDEAVOUR TO CONTINUOUSLY KEEP ADDING FEATURES THAT ARE IN LINE WITH THE TECHNOLOGICAL INNOVATION AND EVOLUTION IN ORDER TO SERVE ARE CLIENTS IN THE BEST POSSIBLE WAY

Feature	Service	Expected availability	Remarks
Border Roaming	SCCP & DIAMETER Signalling	31-Jan-2022	Intelligent border roaming function avoid unnecessary handovers or location updates near national border
Signalling Security	DIAMETER	31-Mar-2022	Signalling security for DIAMETER interface to detect and protect SPAM or frauds
Reporting & Monitoring	SCCP & DIAMETER Signalling	30-Apr-2022	Provide access to customer to generate and see reports of their signalling traffic for business intelligence and monitoring purpose
Burstable Billing	IPX/GRX	31-May-2022	Charge customer's data roaming traffic automatically on usage basis
Reporting	IPX/GRX	31-Jul-2022	Provide access to customer to generate and see reports of their data traffic for business intelligence & monitoring purpose
Roaming Hub	5G roaming	Dec-2022	Provide MNOs access to 5G enabled roaming partners with no efforts on signing roaming agreements
VoLTE Roaming	VoLTE services	Dec-2022	Carry VoLTE traffic with no hassle for MNOs to sign VoLTE agreements with RPs
LTE-M & NB-IoT roaming	LWPA Roaming	Mar-2023	Provide hub service for LTE-M and NB-IoT devices
5GS Roaming	5Gs signalling & Data	Dec-2022	Carry 5G signalling and data traffic between roaming partners

# ROAMING VALUE ADDED SERVICES



# MOBILITY VALUE PROPOSITION ON A PAGE

## SCCP

### Unique Multi-STP Configuration

- Superior redundancy and reach - 6 global STPs
- Fully redundant, scalable hi-speed inter-STP backbone

### One stop shop roaming solution

DIAMETER signalling, data (GRX/IPX), voice, messaging and IoT services, Tata Communications provides single window for all roaming services

### Minimal 3rd party dependencies

With owned infra network and number of roaming solutions, Tata Communications minimizes dependencies on 3<sup>rd</sup> parties

### Excellent reach

- 200+ direct customers
- Reach to 900+ destinations in ANSI and ITU plane
- 230+ PoP locations

### E2E Infra network

- Network Equipment like STPs, SMS Aggregators, conversion platform, Lawful interception nodes
- Global connectivity Network
- Globe covered cables

### Follow the Sun support

- 2 NOC centres in different time zones
- Regional presales and sales teams provide all-time available experience

## DSX

### Reliable Transport

- Global coverage - 74 On-Net PoPs in 40 countries
- Flexible IP transport configuration options
- S6a, S6d, S8 and S9, Relay Agent, Proxy Agent
- SCTP multi-homing, Load balancing, Congestion control, IR.77 compliant (inter-operator IP BB security)
- IR88 conforming

### VAS

- Enables MNOs to leverage LTE Steering over the cloud
- Hosted DEA support

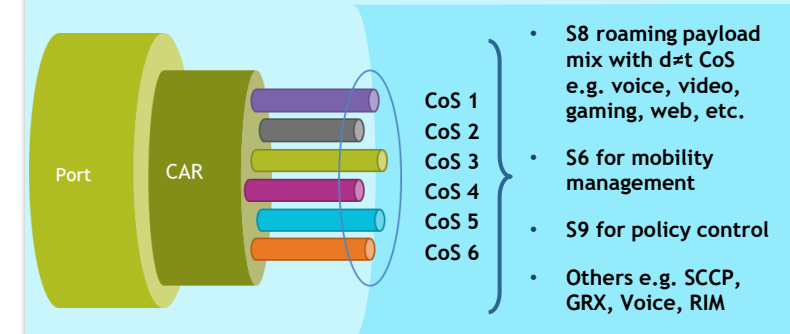
### Superior QoS

- Comprehensive SLAs,
- 2 pairs of DRAs with geo-redundant network architecture
- IR34 conforming
- Pro-active monitoring, 24/7/365 dedicated support desk with up to 99.999% availability
- Fast re-route (FRR) in the network core
- Support different CoS levels (1 to 6)

### Worldwide Peering

Tata Communications ensures reachability to destination because of its worldwide peering relations with all the major roaming service providers

## IPX



10 GE ready backbone

200+ PoPs deployed in all continents

5 types of access management

Customer self-provisioning and 100G backbone on the roadmap

QoS offering supporting a mix of up to 6 classes of service at any one time

Scalable bandwidth with quick TAT to add capacity when the need arises

Flexible B/W pricing catered to evolving CoS and application type usage patterns

One simple monthly fee for any mix of class of service with up to 50% usage on CoS1 and 2

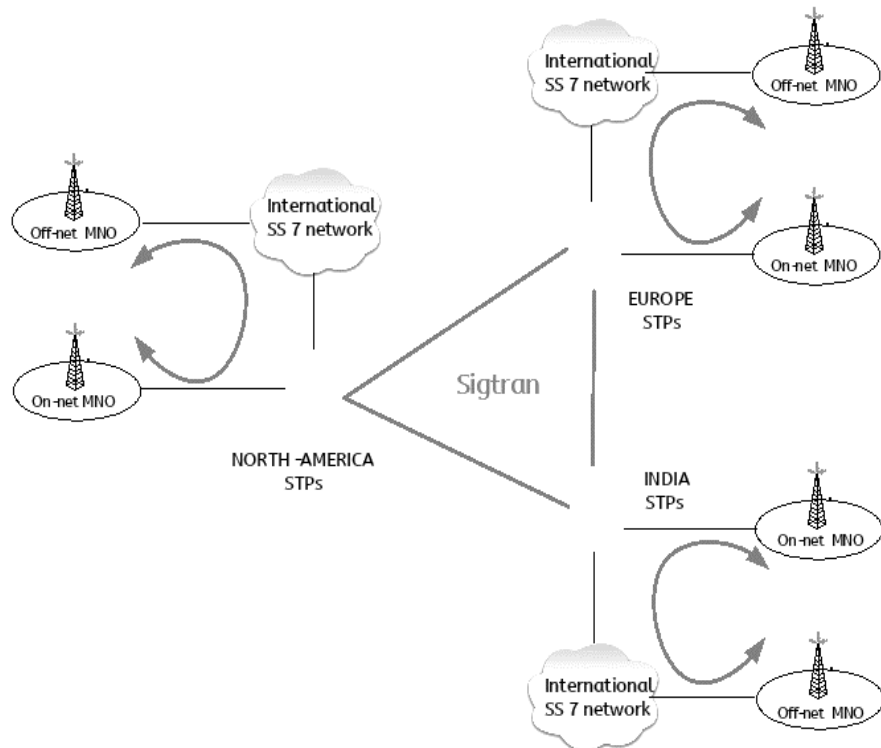
# Appendix



# SIGNALLING NETWORK CAPABILITIES | MULTI - STP CONFIGURATION

## NETWORK OVERVIEW

### UNIQUE MULTIPLE-STP APPROACH

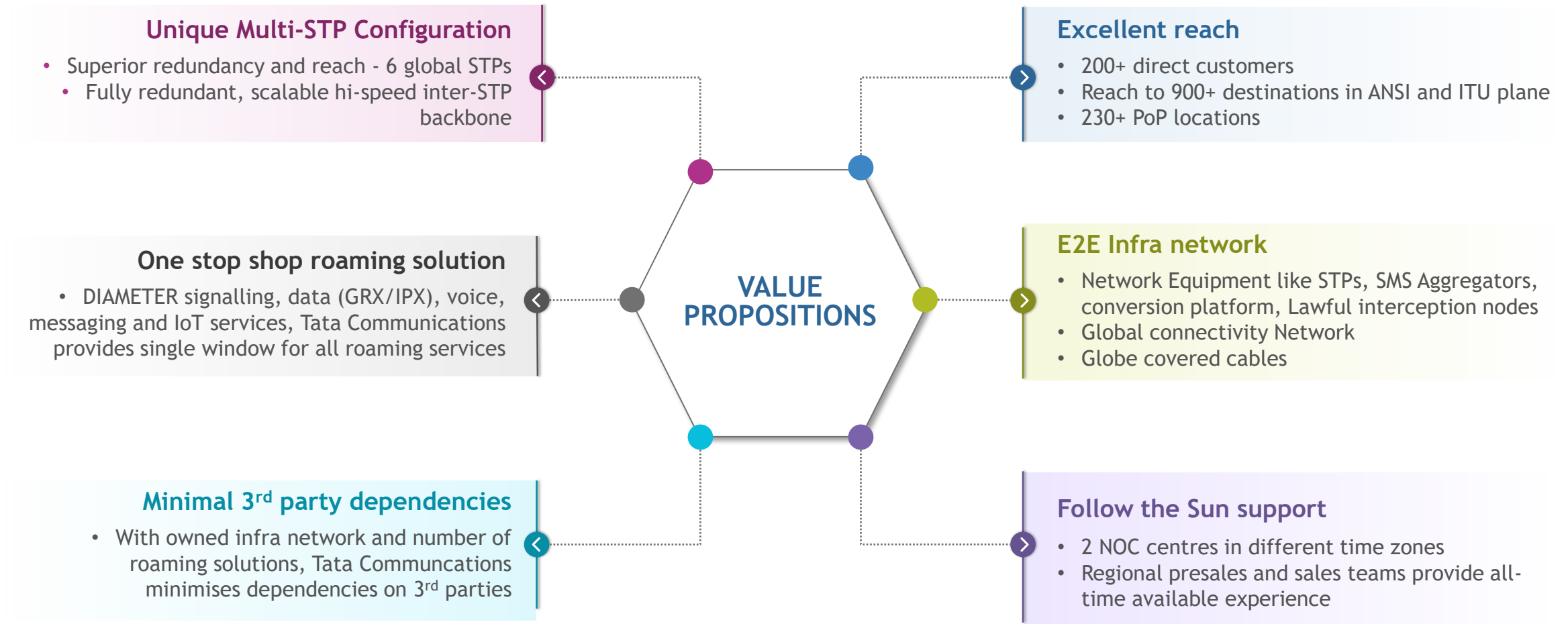


### UNRIVALLED NETWORK REDUNDANCY

- **6 STPs on 3 different continents:**
  - STPs from Oracle - most advanced and reliable SS7 vendor
  - Rapidly scalable - designed to handle sharp peaks
- **Regional Traffic Localisation:**
  - Traffic between regional MNOs stays within same STP-pair
  - Better resiliency and low round-trip delays
  - Better impact isolation during major events
- **Redundancy Between STP-Pairs**
  - During major cable system failure, traffic can be rerouted through alternate inter-STP link-sets.
- **Sigtran capabilities:**
  - Sigtran ring between STPs - additional redundancy thanks to multi-homing

The redundancy of a multi-IGP configuration with traffic symmetry and operational benefits of a single service provider

# SCCP VALUE PROPOSITION



# DSX VALUE PROPOSITION

## Reliable transport

- Global coverage - 74 On-Net PoPs in 40 countries
- Flexible IP transport configuration options
- S6a, S6d, S8 and S9, Relay Agent, Proxy Agent
- SCTP multi-homing, Load balancing. Congestion control, IR.77 compliant (inter-operator IP BB security)
- IR88 conforming

## VAS

- Enables MNOs to leverage LTE Steering over the cloud
- Hosted DEA support



## Superior QoS

- Comprehensive SLAs,
- 2 pairs of DRAs with geo-redundant network architecture
- IR34 conforming
- Pro-active monitoring, 24/7/365 dedicated support desk with up to 99.999% availability
- Fast re-route (FRR) in the network core
- Support different CoS levels (1 to 6)

## Worldwide peering

- Tata Communications ensures reachability to destination because of its worldwide peering relations with all the major roaming service providers

# IPX VALUE PROPOSITION

Tata Communications LTE Roaming Solution offers a robust and scalable upgrade path to 4G, along with the ability to support a mix of rich media roaming services

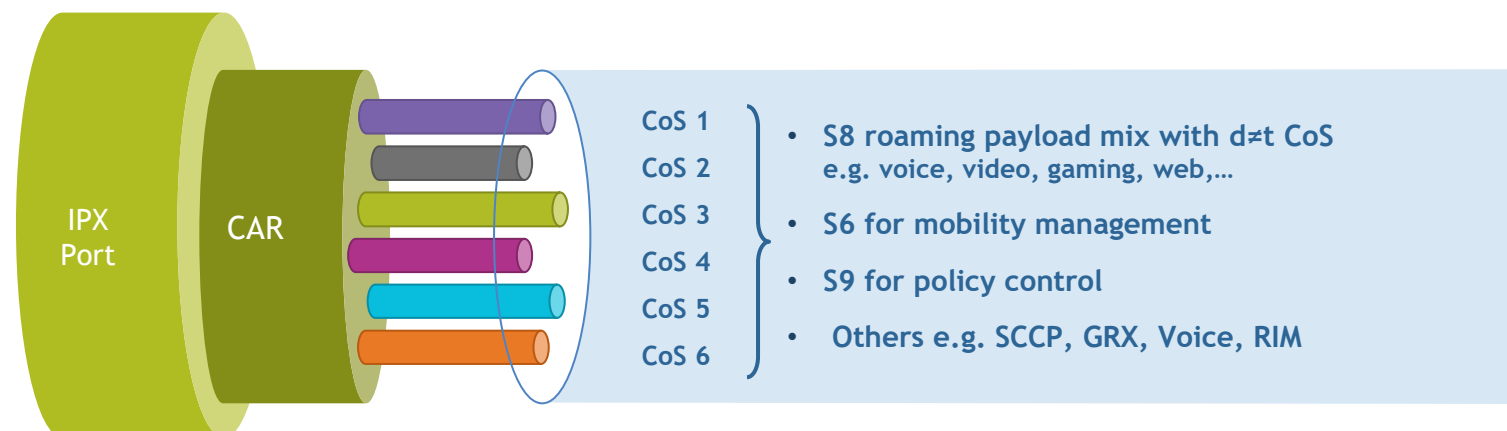
10 GE ready backbone

QoS offering supporting a mix of up to 6 classes of service at any one time

Flexible B/W pricing catered to evolving CoS and application type usage patterns

200+ PoPs deployed in all continents

5 types of access management



Customer self-provisioning and 100G backbone on the roadmap

Scalable bandwidth with quick TAT to add capacity when the need arises

One simple monthly fee for any mix of class of service with up to 50% usage on CoS1 and 2

# THANK YOU

**tatacommunications.com**

[www.tatacommunications.com](http://www.tatacommunications.com) | [@tata\\_comm](https://twitter.com/tata_comm)

<http://tatacommunications-newworld.com> | [www.youtube.com/tatacomms](http://www.youtube.com/tatacomms)

© 2017 Tata Communications. All Rights Reserved. TATA COMMUNICATIONS and TATA are trademarks of Tata Sons Limited in certain countries.