

# TATA COMMUNICATIONS MOVE™

Ensuring Born Connected  
and Always - ON devices



*The digital economy is changing the way we work, live and play, opening up new service opportunities. Connected asset projects have a dependence on the ability to securely connect assets and transfer the data when and where required. Reliable, secure and cost-effective connectivity has become a commodity and value has shifted rapidly to the management, interpretation and application of data being generated by connected assets.*



As organizations embark on their digital journey, mobile networks play a fundamental role in this transformation. Cellular connectivity is a cost-effective way to reach remote assets or interact with customers, employees, suppliers, and business partners - in real-time.

This transformation calls for radical changes in how mobile network services are consumed and integrated into an organisations business processes.

Success in IoT deployments has traditionally involved connectivity trade-offs across mobile coverage, reliability, security, quality and scalability to meet business critical requirements.

With Tata Communications MOVE™ this trade-off is redundant. Tata Communications MOVE™ is an intelligent, secure, connectivity management and data enablement platform for IoT and consumer devices. It enables enterprises to implement connected, end-user applications to improve operational efficiencies and generate new revenue streams.

Tata Communications MOVE™ comprises integrated capabilities including an Application Enablement platform, a Data Management platform and a Connectivity Management platform.

## Tata Communications MOVE™ application enablement platform



The Application Enablement Platform (AEP) provides an interface for connectivity integration via API connectors. It is where the core device management features and data collection from connected devices and web-based services are handled.. The AEP supports IoT service provisioning, subscription management, business rules and workflow automation to make set-up and implementation quick & easy.

The AEP is also where the 'Business Rules Engine' resides. This presents a flexible and reusable customer self-service capability, which can easily be configured, without the need for expensive and time consuming custom development.

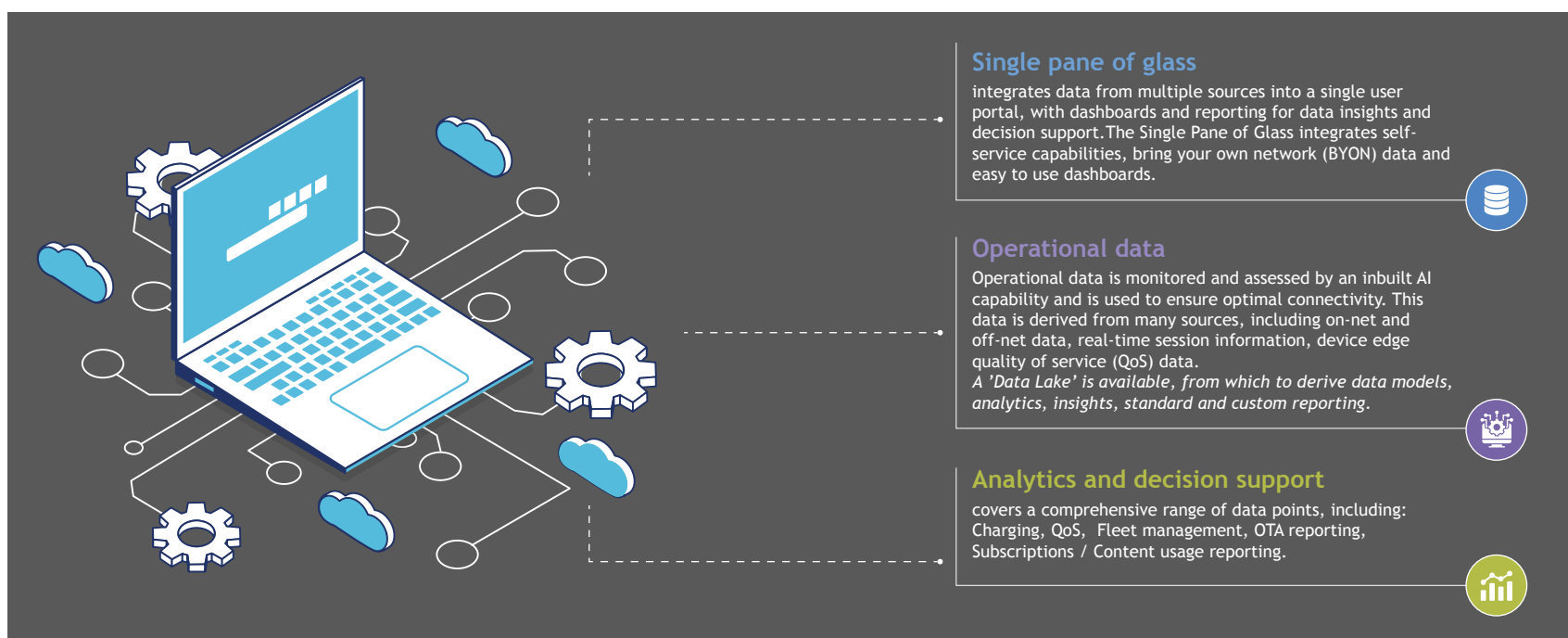
The AEP manages online charging (OCS), BSS/OSS, Subscription Management and Resource Management automation. Segment specific applications, such as firmware and software OTA management, fleet management applications and consumer facing data and content subscriptions are all managed using the Application Enablement Platform.





# Tata Communications MOVE™ data management platform

The value of connected devices is all about the information exchanged and how that information is applied. Tata Communications MOVE™ places a significant focus on data and information management and its application. This approach has several dimensions.



## Tata Communications MOVE™ connectivity management platform

Managing SIM activation, configuration and suspension, along with providing the network facing links to BSS/OSS functions, the connectivity management platform provides the interfaces to the network infrastructure and core connectivity.

Through our relationships with Mobile Network Operators (MNOs) around the world, Tata Communications MOVE™ delivers access to ~600 MNOs, across 200 countries and territories.

A variety of functions fall into the connectivity management area, including SIM profile and access management, whether roaming profiles or local profiles and whether 3G, LTE or 5G profiles. Control over whether access to NB-IoT and Cat-M network is managed here, as are rules about public and private access and interworking.



# Tata Communications MOVE™ eSIM hub

Tata Communications has developed a unique eSIM hub concept, ensuring inter-operability across eSIM types and profiles, regardless of manufacturer or mobile network operator. This ensures future proofing for any OEM that might wish to work with multiple eSIM vendors.

Tata Communications MOVE™ manages remote SIM provisioning (RSP), including download, enable, disable. It supports eSIM industrial infrastructure services (DP, SR), consumer eSIM services, (DP+) and eSIM profile management, covering individual eSIM self-service, bulk eSIM self-service, profile donation from MNO.

A related development is support for CloudSIM™, whereby SIMs are physically separated from the

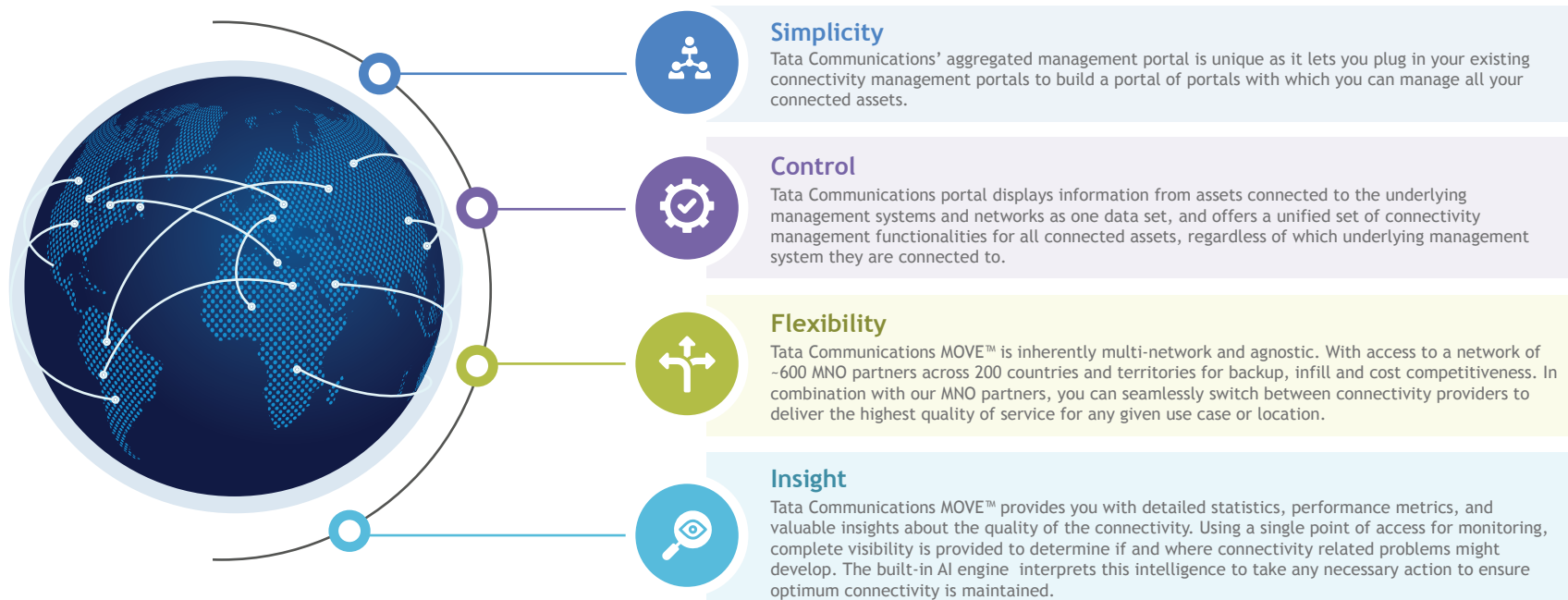
connected asset, with each connected asset having a linked software client. This approach enhances device security and eliminates the need for SIM hardware on a device, meaning smaller and lighter devices can now be connected. CloudSIM™ is an on-demand secondary connectivity, ideal for use when a device might only need to connect for a short time, to an alternative network or even to a Private Network.



## Why Tata Communications?

We're the connection!

There is a problem with relying on multiple Mobile Network Operators (MNOs) to achieve a global connectivity footprint. Having multiple MNOs introduces complexity such as multiple integrations, on-going administration, different user portals, and APIs. Amalgamating reporting across different MNO platforms, interfaces, and multiple data feeds also becomes increasingly difficult. Tata Communications MOVE™ takes a different approach by offering you a single portal to manage all your connected assets and services globally, regardless of the connectivity technology or the service provider.



## About Tata Communications

Tata Communications is a leading global digital ecosystem enabler that powers today's fast-growing digital economy. The company's customers represent 300 of the Fortune 500 whose digital transformation journeys are enabled by its portfolio of integrated, globally managed services that deliver local customer experiences. Through its network, cloud, mobility, Internet of Things (IoT), collaboration and security services, Tata Communications carries around 30 per cent of the world's internet routes. It connects businesses to 60 percent of the world's cloud giants and four out of four-five mobile subscribers.

Its global reach underpins the company's capabilities. It owns the world's largest wholly-owned subsea fibre backbone and operates a Tier-1 IP network connecting to more than 240 countries and territories. Tata Communications globally delivers a superior, always-on experience. We maintain a Leader position in the Gartner Magic Quadrant. Plus, reassuringly, we are a Cisco' Gold Standard UC Experience' partner globally. We have your business covered.

One partner: Single point of accountability with a carrier-grade experience and optimised delivery, thanks to our global managed services.

---

For more information, visit us at [www.tatacommunications.com](https://www.tatacommunications.com)

Contact Us

Share

