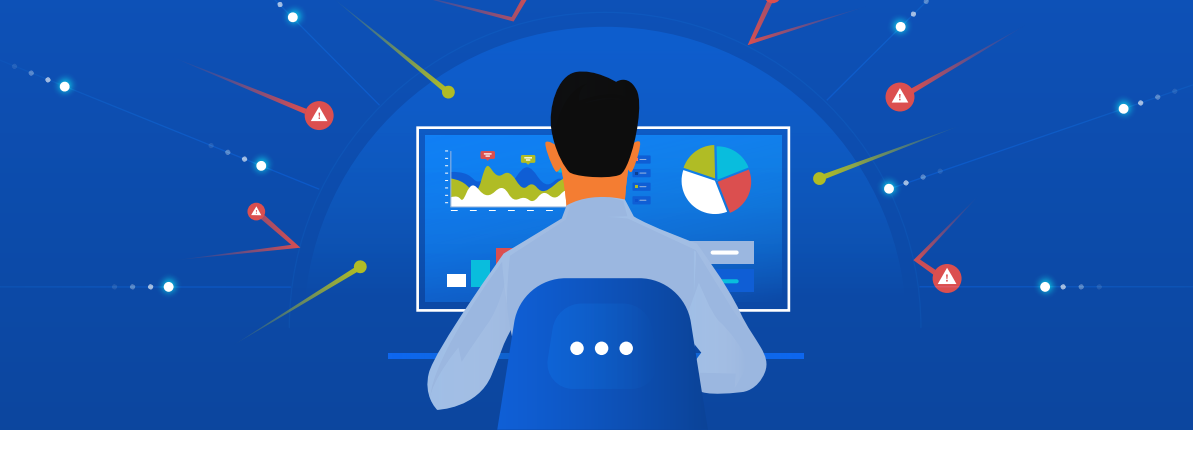




# TATA COMMUNICATIONS MANAGED DETECTION AND RESPONSE (MDR)



## ENTERPRISE-GRADE MDR TO PROTECT YOUR SCALING OPERATIONS



**3.5 Tbps**  
of traffic screened daily



**9.5 Bn**  
events screened daily



**2.6 Mn**  
threats managed daily



**270K**  
IOCs processed daily

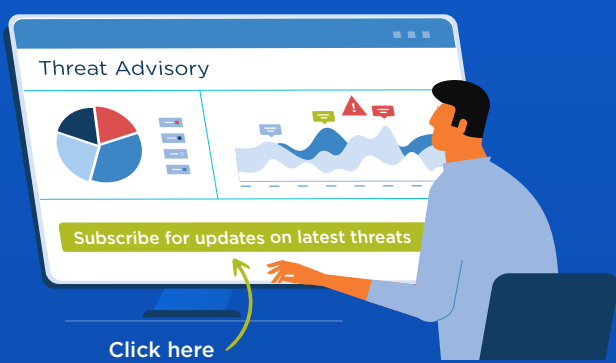
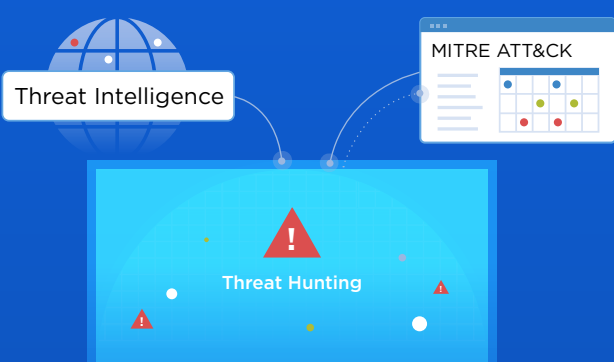


**950+**  
integration connectors

## ESTABLISHED CYBER SECURITY PRACTICE BACKED BY INTELLECTUAL PROPERTY

### Advanced threat protection

- 400+ MITRE ATT&CK aligned use cases
- 800+ use cases created for advanced threat



### Proactive security

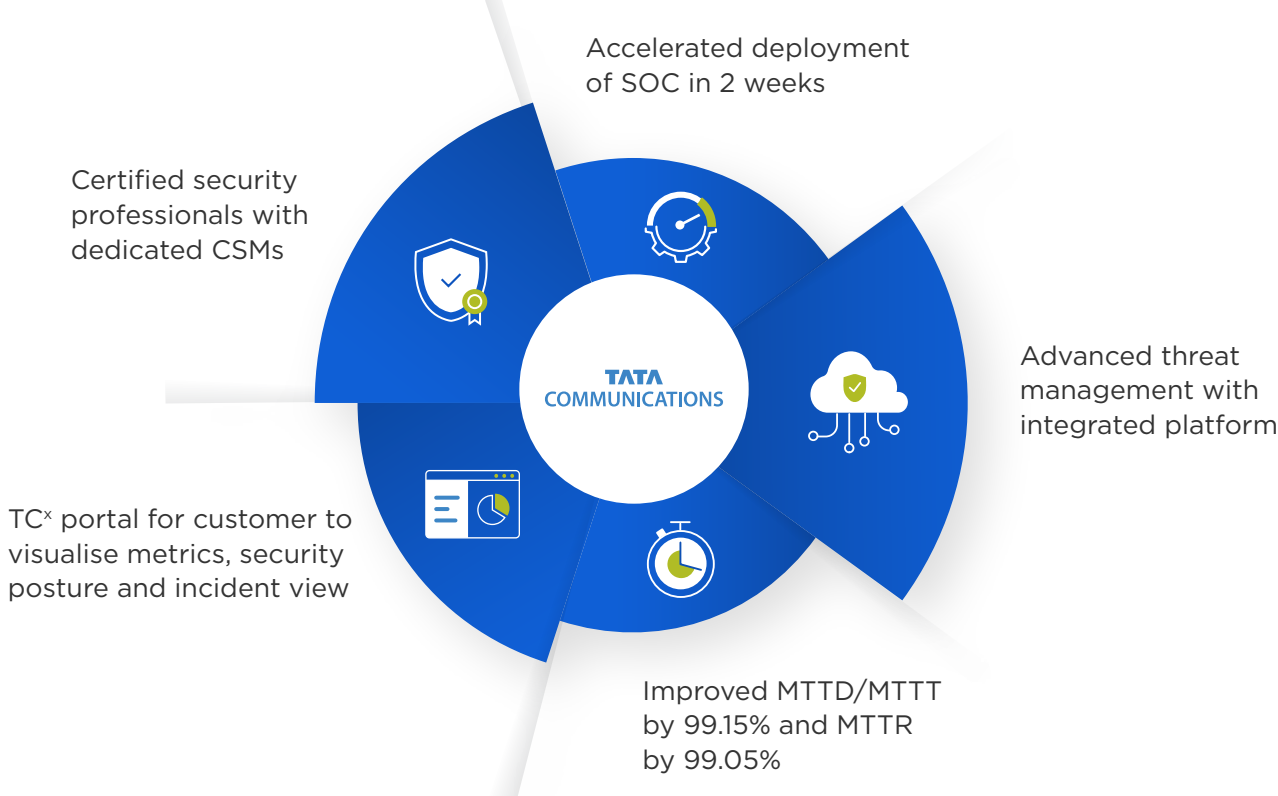
- 100+ MITRE ATT&CK aligned threat hunting queries
- 80+ Threat Advisories published to customers every month

### Improved operational efficiency

- 60+ SOAR playbooks for automated triaging and threat response
- 30% Automated hunting patterns



## TATA COMMUNICATIONS DELIVERS



## TRUSTED BY COMPANIES GLOBALLY. RECOMMENDED BY ANALYSTS.



Capital securities

Hundreds of customers across industries



Retail



Manufacturing



BFSI



Healthcare



NelsonHall identified Tata Communications as a Leader in Cyber Resiliency Services due to its end-to-end cyber capabilities, in particular its strong security services supported by an extensive network services portfolio; plus, its investments in end-to-end cyber security (such as the open xDR security platform) and in SOAR for the automation of security responses. The company has demonstrated the success of its approach to increase the level of security and quickly and effectively respond to cyber incidents within large enterprise clients."

**Mike Smart**, Senior Analyst and Operations Officer, NelsonHall



KuppingerCole identified Tata Communications as a Product Leader in Managed Detection and Response (MDR) Services due to its simple licensing model, strong focus on interoperability with a wide range of third-party security products, flexible deployment options available to suit customer requirements, and strong MDR coverage of cloud computing environments as well as a good range of detection and response capabilities."

**Warwick Ashford**, Senior Analyst, KuppingerCole